



SHIRASE

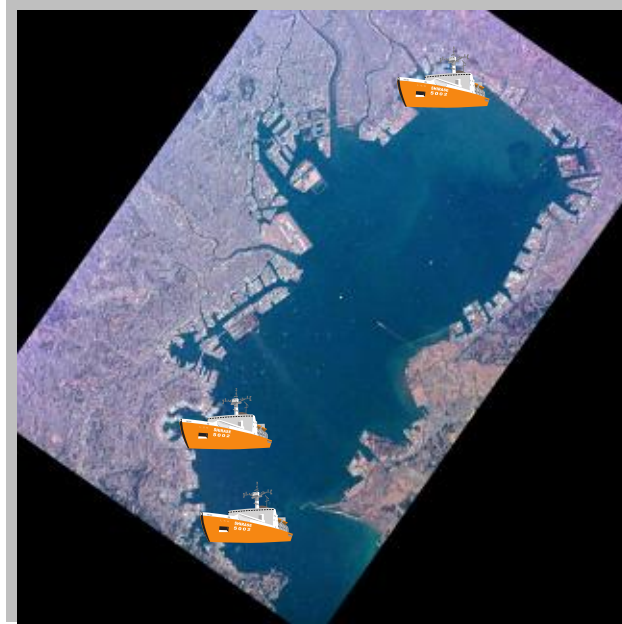
as “Sea-Sophy”

Representative Managing Director of Weathernews
Jiro Miyabe

無常識でできたこと
(What we did by no-common sense)



SHIRASE from Yokosuka to Funabashi



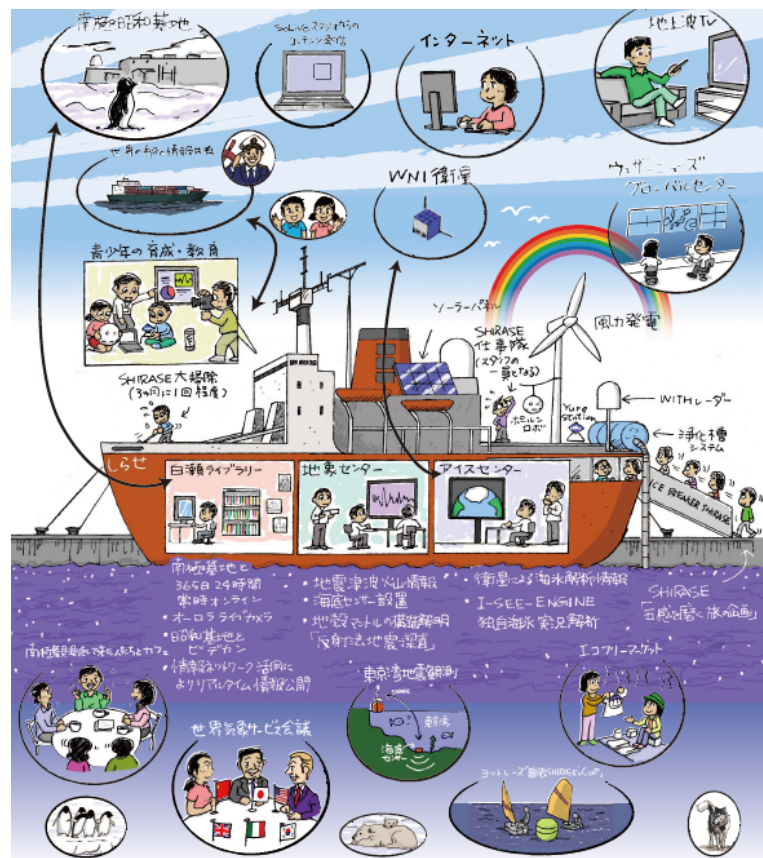
Port of Honmoku
(2010.2.10~2010.3.31)

Port of Yokosuka
(~2010.2.10)

Port of Funabashi
(2010.3.31~present)

これからのSHIRASEの無常識 “No common sense”

- 1. Environmental Monitoring**
(環境をモニタリングする場)
- 2. Environmental Discussion**
(環境を考える場)
- 3. Environmental Awareness**
(環境意識を高める場)



SHIRASE as “Sea-Sophy”

情報発信の場



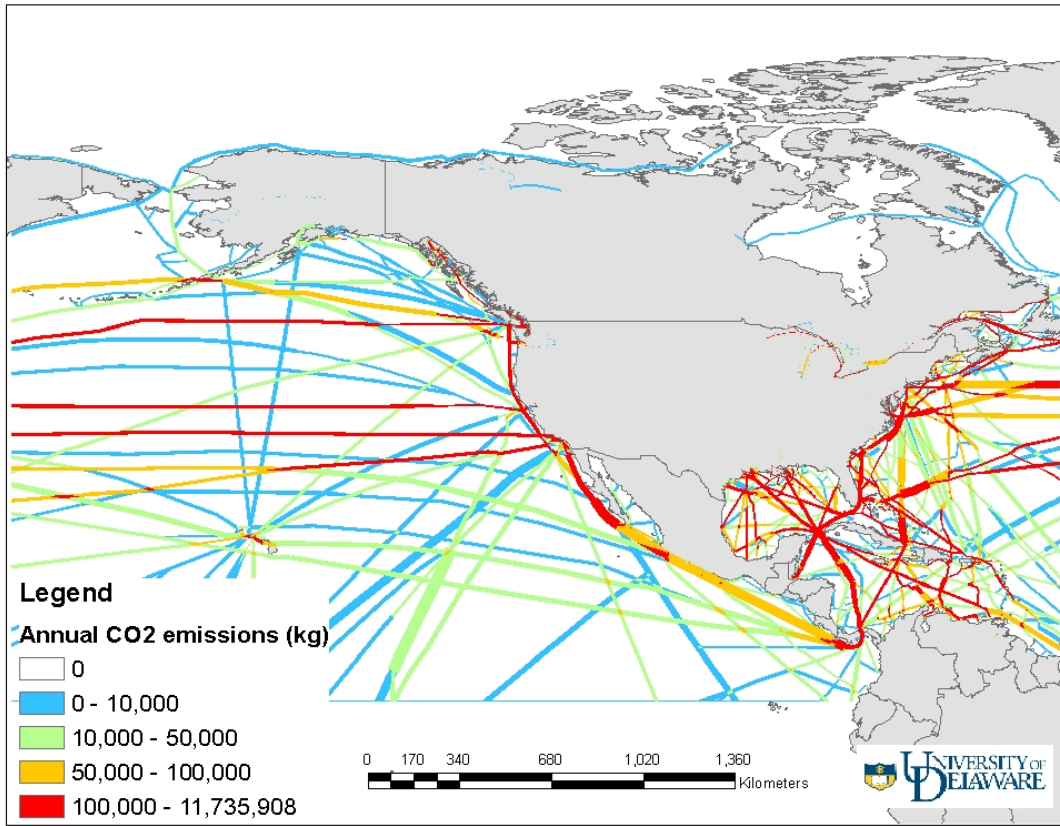
海運での次の無常識 (Next No-common sense for the shipping industry)

常識 → 無常識

技術革新
(環境への取り組み)

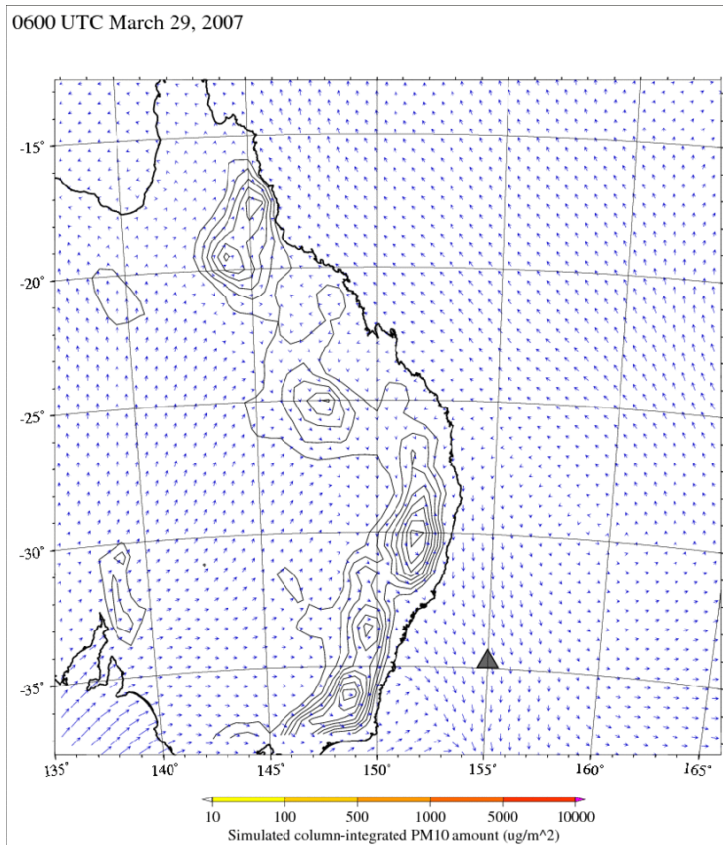
Emission Monitoring

Annual CO2 Emissions by Ship



University of Delaware

Emission Simulation in New Castle



海運での更なる無常識

Zero Emission Routeing

Eco Routeing = Zero Emission Routeing?!

知力で地球の躍動するエネルギーを推力へ

	Method (方法)	Reduction Milage Reduction Amount (削減燃費/排出量)
Optimum Ship Routeing (航海到着時間)	-Optimized RTA -Speed Allocation	5%
SSS Routeing (最低速度)	Super Slow Steaming in all good weather	30%
Ocean Current Routeing (海流)	Maximize Ocean Current Factor for minimizing emission	7%~100%
Zero Emission Routeing 排出量ゼロへの挑戦		5%~100%

Eco Routeing

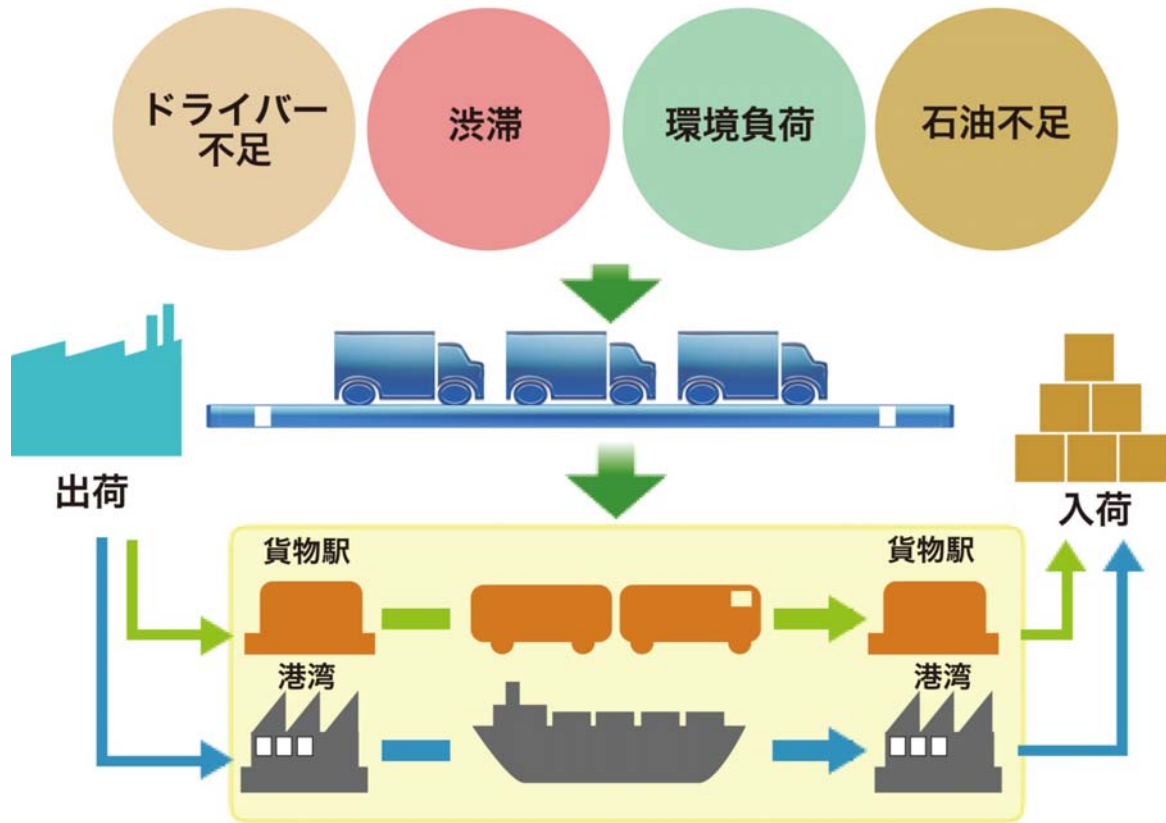
目標管理型 “Target Emission”

Modal Shift

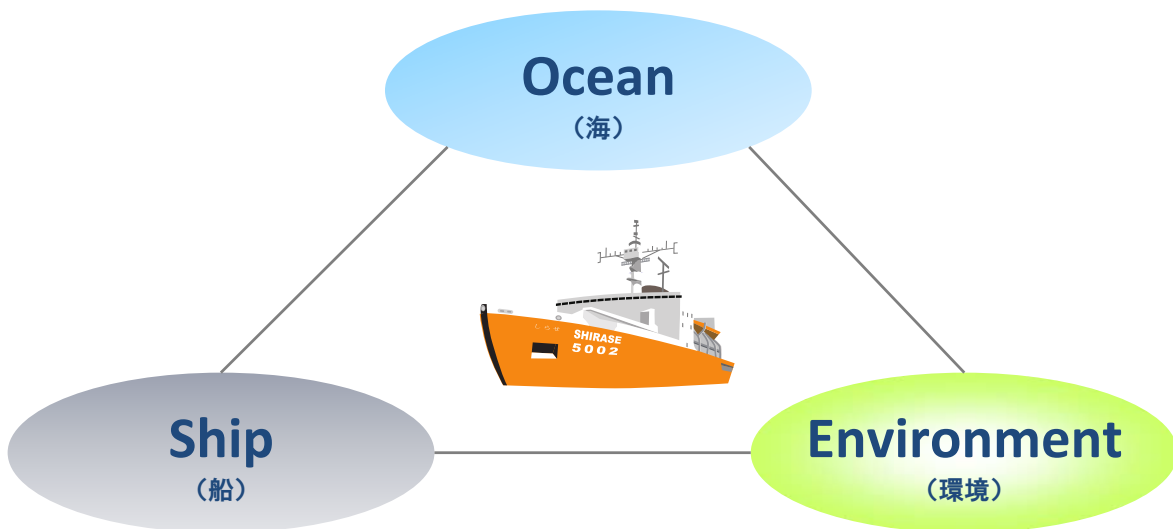
交通気象としての発展



Modal Shift



SHIRASE as “Sea-Sophy”



無常識でできること