

# Ship Motion Monitoring System

# “Yure” Station for Ship Masters

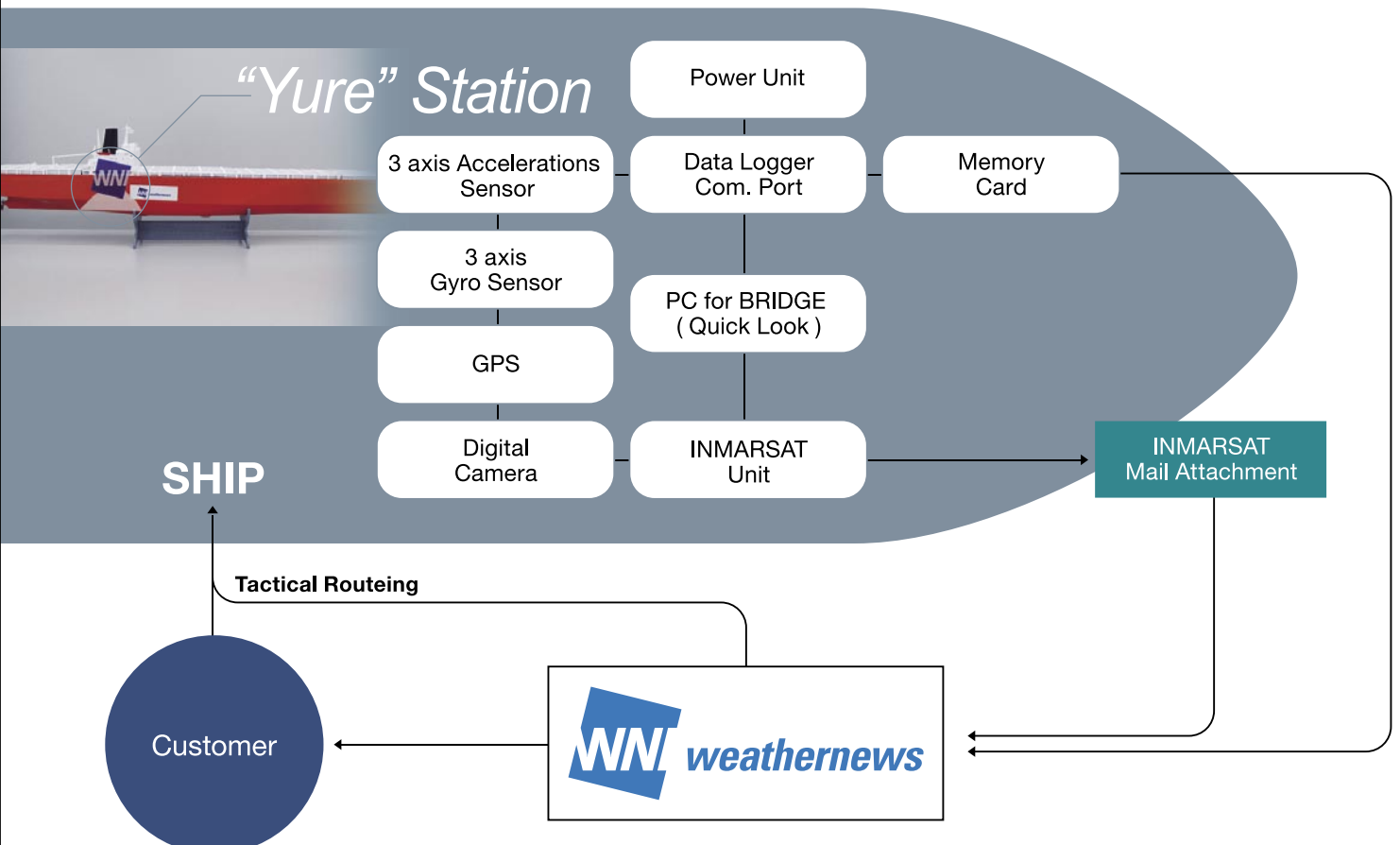
Weathernews has developed a ship motion monitoring system, the “Yure” Station to monitor vessel’s motion during the voyage. The “Yure” Station project will be developed in conjunction with global shipping companies which are making a special effort to ensure safe navigation and load preservation.



## Function

The “Yure” Station is set up on the vessel's bridge and monitor vessel motion during the voyage at vessel's bridge.

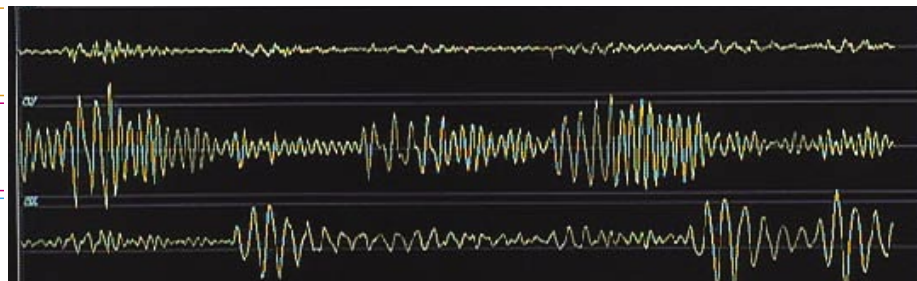
## “Yure” Station Service



## Service Structure

This system is developed in order to allow ship masters to judge vessel's motion objectively and utilize this monitored motion data for optimizing their route decisions and improving analysis of the vessel's performance.

The "Yure" Station monitors the vessel's three linear accelerations / motions in 3 dimensions.



Monitored Data Sample

- X Monitoring Surging
- Y Swaying
- Z Heaving

A further upgraded version has also three rotational motion monitoring functions using an additional Gyro sensor for Angular Acceleration.

- X' Monitoring Rolling
- Y' Pitching
- Z' Yawing

## Emerging Technology

Monitored data will be analyzed and used in our Total Fleet Management Service (TFMS), route selection and ship motion prediction for optimum ship routing or ship performance evaluation by monitored motion data.

Weathernews will install over 3,000 "Yure" stations on vessels around the world and collect ship motion data in order to better understand impact of weather conditions on vessel's handling at all the times.

<http://weathernews.com/TFMS>

