

Onboard System BRIDGE ver. 5.2 for Ocean Current Routeing Emission & Fuel Saving

Weathernews Inc. (Location: Mihama-ku, Tokyo: President: Chihito Kusabiraki) has started installing an upgrade of our onboard system BRIDGE, on vessels.

Weathernews has been working in partnership with shipping companies to maximize global fleet performance, providing weather risk management and optimum routeing service. The Total Fleet Management Service (<http://weathernews.com/TFMS/>) meets the needs of masters, shore side ship operators and ship managers 24 hours a day, 365 days a year. TFMS supports over 24,000 voyages per year.

BRIDGE is supporting ship masters by confirming the best route and any weather risk based on the latest weather forecasts and ocean current data. About 5,000 vessels are now using BRIDGE. The upgraded BRIDGE ver. 5.2 has an important function: Ocean Current Routeing for the best yield voyage efficiency by providing more detailed weather and sea information.

[Functions of BRIDGE]

1. Detailed Voyage Simulation
2. Route Comparisons
3. The Quickest Arrival Time and The Least Fuel Route Calculation
4. Ocean Current Tactical Routeing

[Renewal Points of BRIDGE (ver.5.2)]

1. High Resolution Analysis and Forecast Current Data (WNI Hybrid Current)

You can see our original analysis and forecast current data on your on-board PC screen. This current data is displayed with 1.0×1.0 (deg) resolution and updated once a day for 3 days ahead. In addition, 0.5×0.5 (deg) resolution current data is available for the following strong current areas: the Agulhas Current, the Kuroshio Current, the Gulf Stream and the Equatorial Counter Current.

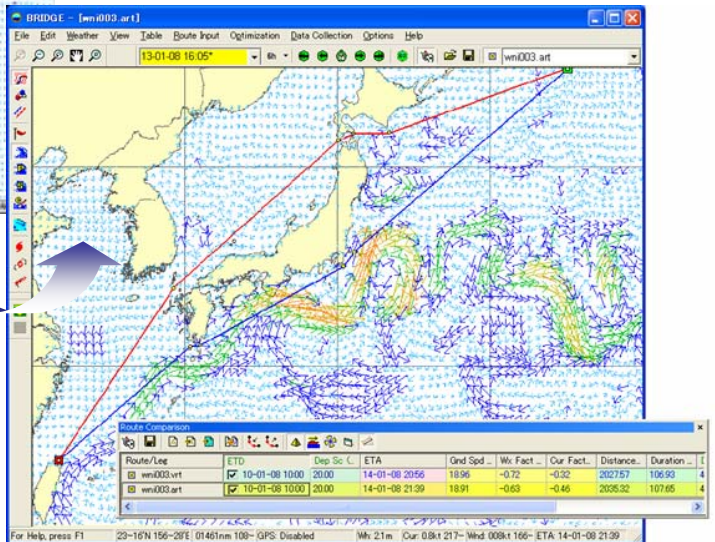
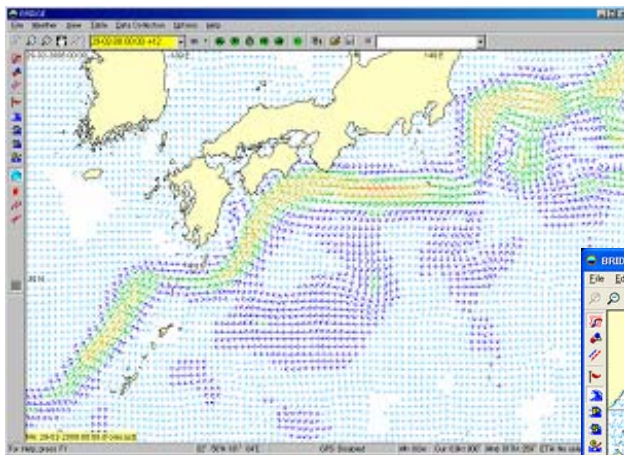
2. High Resolution Wind and Wave Data

The resolution of wind and wave data in BRIDGE is enhanced from 2.5×2.5 (deg) to 1.0×1.0 (deg). BRIDGE enables masters to navigate with tactical handling based on the detailed information of wind and wave conditions (wind direction and speed, wave direction and height) and information about gales, monsoons and tropical storms.

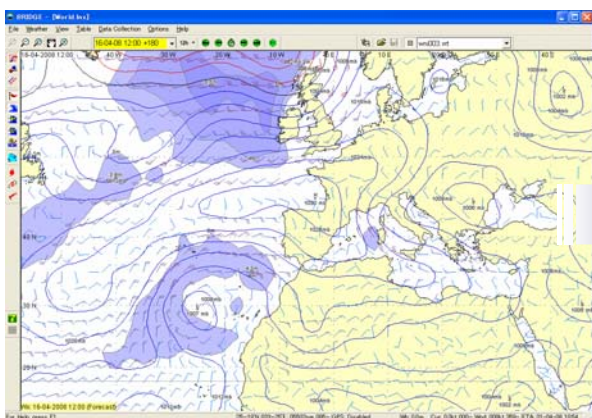
By using our BRIDGE and Optimum Ship Routing (OSR) service together, one could also compare between the master's original intended route and our recommended route based on the weather and current data. BRIDGE improves on text-based route recommendations by providing graphical and visual information.

Weathernews will continue to upgrade the Total Fleet Management Service, including BRIDGE, for improved safety, optimizing fuel consumption and reducing emissions with global shipping companies for the best yield.

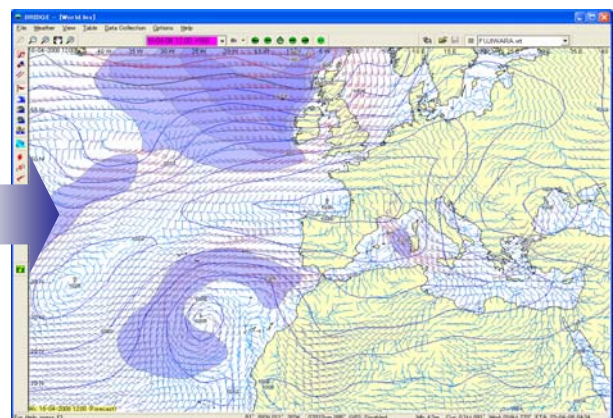
**High Resolution (0.5×0.5 deg)
WNI Hybrid Ocean Current Data**



**Ocean Current Routing based on
the upgraded Ocean Current Data**



**BRIDGE: the previous ver.
(2.5×2.5 deg Winds and Waves)**



**BRIDGE: the latest ver. 5.2
1.0×1.0 deg Winds and Waves
shows local heavy conditions**